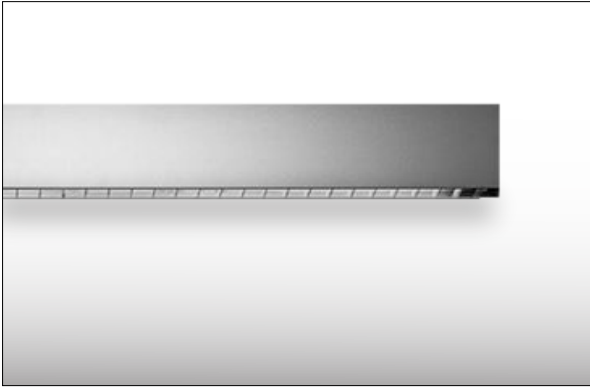


Project name: \_\_\_\_\_

Type: \_\_\_\_\_



Slim profile pendant luminaire provide direct and or indirect lighting. Available as single modules or continuous runs suitable for interior application where general lighting is required.

**Source:** HE, HO T5 fluorescent (not included).

**Optics:** General lighting.

**Material:**

Body: Extruded aluminum profile with die-cast end caps and joiner.

Diffuser: PMMA frosted acrylic.

Mounting: Painted steel bracket.

**Electrical:** High efficiency electronic ballast 120V or 277V.

**Dimming:** Contact factory for dimming options.

**Mounting:** Installed on a horizontal single gang junction box.

**Finish:** White RAL9003, black RAL9004 or gray RAL9006

**Weight:** TBC.

**Warranty:** 1 year limited warranty.

**Certification:** cULus listed for Damp location.

**MADE IN CANADA**

Project name:

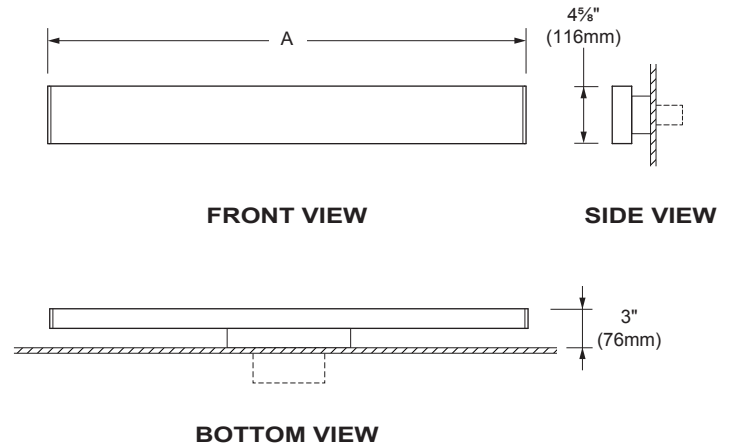
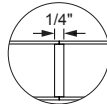
Type:

### LENGTH

Nominal length	Actual length A
02	2'-1 $\frac{7}{8}$ "
03	3'-1 $\frac{7}{8}$ "
04	4'-1 $\frac{7}{8}$ "
06	6'-1 $\frac{7}{8}$ "
08	8'-1 $\frac{7}{8}$ "
12*	12'-1 $\frac{7}{8}$ "
16*	16'-1 $\frac{7}{8}$ "
24*	24'-1 $\frac{7}{8}$ "

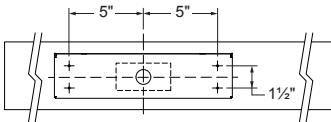
The luminaires runs can be manufactured in most lengths with 12" increments. Contact the factory for precise lengths and anchoring point details.

\*Note that a visible 1/4" joint is used for lengths greater than 8'.

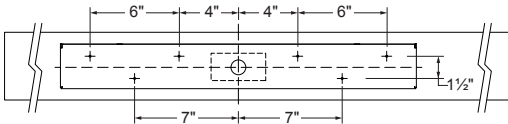


### MOUNTING POINTS LAYOUT

#### 4ft UNIT



#### 8ft UNIT



### INDIRECT / DIRECT

MODEL	LENGTH	DISTRIBUTION	LAMPING	VOLTAGE	FINISH	OPTIONAL EM
	<b>LENGTH</b> <input type="radio"/> 02 <input type="radio"/> 03 <input type="radio"/> 04 <input type="radio"/> 06 <input type="radio"/> 08 <input type="radio"/> 12 <input type="radio"/> 16 <input type="radio"/> 24	<b>DISTRIBUTION</b> <input type="radio"/> IO - Indirect only <input type="radio"/> DI - Direct & indirect <input type="radio"/> DO - Direct only	<b>LAMPING</b> <input type="radio"/> HE - 14W, 21W or 28W T5 HE Fluorescent <input type="radio"/> HO - 24W, 39W or 54W T5 HO Fluorescent	<b>VOLTAGE</b> <input type="radio"/> 120 - 120V <input type="radio"/> 277 - 277V	<b>FINISH</b> <input type="radio"/> 01 - White <input type="radio"/> 02 - Black <input type="radio"/> 10 - Gray	<b>OPTIONAL EM</b> <input type="radio"/> EM - Emergency ballast

Project name: \_\_\_\_\_

Type: \_\_\_\_\_

### OPTIONAL EMERGENCY

○ **EM** SPECIFY THE QUANTITY OF BATTERY PACKS REQUIRED.  
#BATT. PACK

EM BATTERY PACK ARE ONLY AVAILABLE FOR FLUORESCENT VERSIONS OF 4 FEET AND MORE.

NOTE THAT FOR UNITS LONGER THAN 4 FEET, AN ADDITIONAL FEED, LOCATED AT THE END OF THE LINE, WILL BE REQUIRED FOR MULTI-CIRCUIT LUMINAIRE.

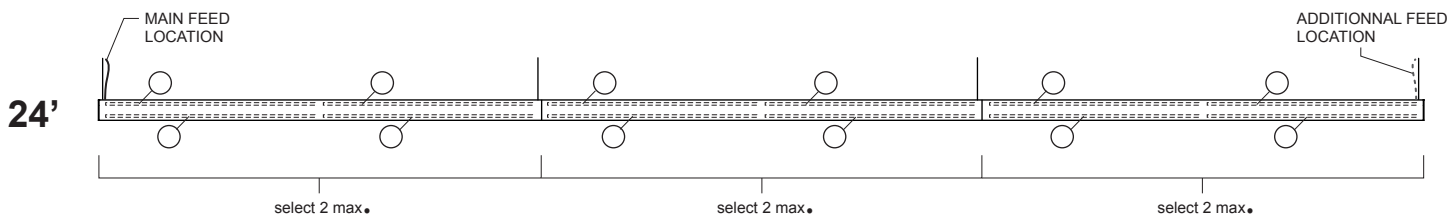
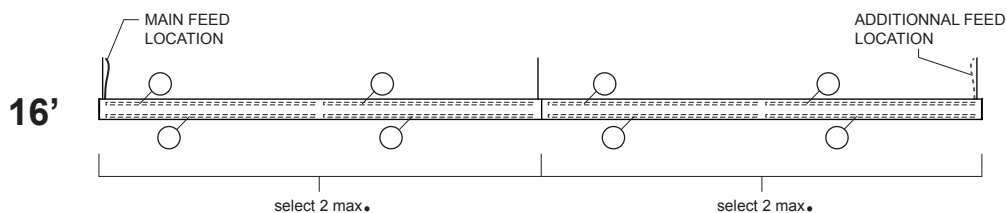
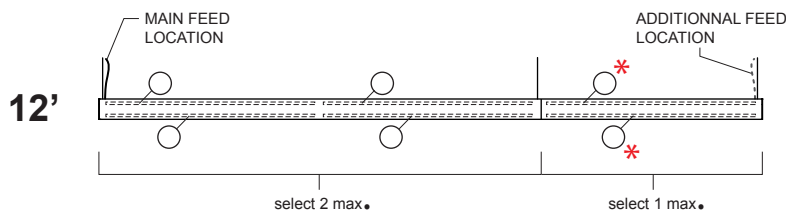
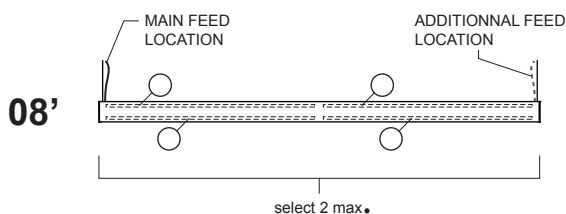
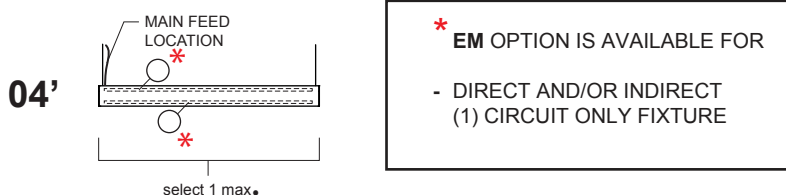
OPERATING VOLTAGE HAS TO BE SPECIFIED FOR **EM** OPTION.

A LAYOUT FROM THE CLIENT IS REQUIRED FOR BATTERY PACK POSITION. USE THE SELECTION TOOL BELOW.

INSURE JUNCTION BOX AT EACH FEED LOCATION.

FOR 28W T5. FOR 54W T5 HO. MAXIMUM MOUNTING HEIGHT=14ft. MAX.

### SELECT EMERGENCY LAMP LOCATION



DUE TO CONTINUOUS IMPROVEMENTS, THE INFORMATION HEREIN MAY BE CHANGED WITHOUT NOTICE.

LAST UPDATE: MAY 30, 2016

NA - R0

# SISTEMALUX



9320 Boul. St-Laurent, suite 100, Montréal (Québec)  
Canada H2N 1N7  
P.: 514.523.1339 F.: 514.525.6107  
www.sistemalux.com