

2C RECESSED TRACK

SPECIFICATION SHEET

PAGE: 1 OF 2

Project name:

Type:



Recessed channel with 2 circuit track.

Material:

Body: Extruded aluminum body and die-cast end caps.
Track: Extruded aluminum professional 2 circuits track.

Electrical: 120 or 277V .

Mounting: Recessed installation using mounting brackets (included)

Finish: White RAL9003, black RAL9004 painted finish or gray RAL9006 painted finish with natural anodized track

Maximum load:

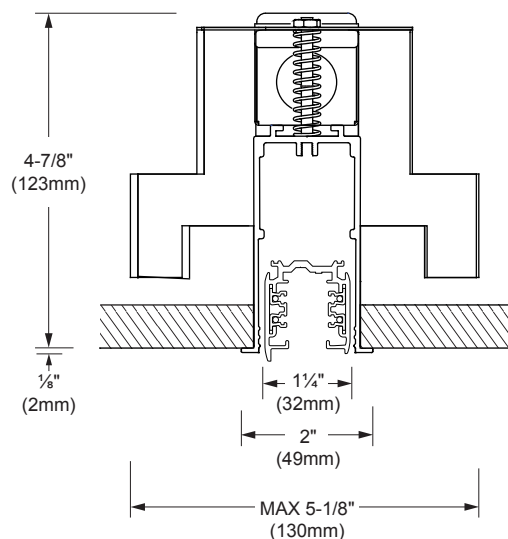
120V: 540 Watts per 24ft section for each circuit
277V: 1240 Watts per 24ft section for each circuit

Weight: 1.5lbs/ft (0.7kg/ft).

Warranty: 5 year limited warranty.

Certification: cULus listed.

Ratings: Dry location



SECTION VIEW

2C RECESSED TRACK

SPECIFICATION SHEET

PAGE: 2 OF 2

Project name:

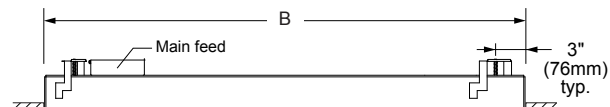
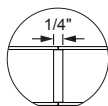
Type:

LENGTH

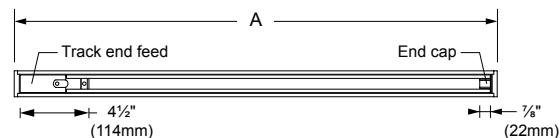
Nominal length	Actual length A	Cut-out B
02	1'-11 ³ / ₈ "	1 ³ / ₄ " x 1'-11 ¹ / ₄ "
03	2'-11 ¹ / ₄ "	1 ³ / ₄ " x 2'-11 ¹ / ₈ "
04	3'-11"	1 ³ / ₄ " x 3'-10 ⁷ / ₈ "
06	5'-11"	1 ³ / ₄ " x 5'-10 ⁷ / ₈ "
08	7'-11"	1 ³ / ₄ " x 7'-10 ⁷ / ₈ "
12*	11'-9 ³ / ₈ "	1 ³ / ₄ " x 11'-9 ¹ / ₄ "
16*	15'-9 ³ / ₈ "	1 ³ / ₄ " x 15'-9 ¹ / ₄ "
24*	23'-7 ¹ / ₈ "	1 ³ / ₄ " x 23'-7 ³ / ₄ "

The track runs can be manufactured in most lengths with 12" increments.
Contact factory for precise lengths and mounting point details.

*Note that a visible 1/4" joint is used for lengths greater than 8'.



FRONT VIEW



BOTTOM VIEW

FEED INFORMATION

Main feed is located at the beginning of the first section. For tracks runs longer than 24' another feed is needed. The feed is located at the beginning of the next following section.

Track end feed is located at the beginning of the first track section. For track runs longer than 8' subsequent track end feeds are needed. The feeds are located at the beginning of the next following track section.

ORDERING INFO

MODEL	LENGTH	DIRECT	OPTIC	VOLTAGE	FINISH
<input type="radio"/> 3502	<input type="radio"/> 02 <input type="radio"/> 03 <input type="radio"/> 04 <input type="radio"/> 06 <input type="radio"/> 08 <input type="radio"/> 12 <input type="radio"/> 16 <input type="radio"/> 24	<input type="radio"/> 2C - 2 circuit track	<input type="radio"/> NA - track	<input type="radio"/> 120 - 120V <input type="radio"/> 277 - 277V	<input type="radio"/> 01 - White <input type="radio"/> 02 - Black <input type="radio"/> 10 - Gray

DUE TO CONTINUOUS IMPROVEMENTS, THE INFORMATION HEREIN MAY BE CHANGED WITHOUT NOTICE.

LAST UPDATE: OCTOBER 13, 2017

EV- R1

SISTEMALUX



9320 Boul. St-Laurent, suite 100, Montréal (Québec) Canada H2N 1N7
P.: 514.523.1339 F.: 514.525.6107 www.sistemalux.com