

MULTIPLE SMALL DOUBLE HALOGEN MR16

SPECIFICATION SHEET

PAGE: 1 OF 2

Project name: _____

Type: _____



General information

Source: MR16 halogen low voltage GU5.3 base (not included).
Max 50W or 35W with insulated ceiling housing.

Optics: Each optical assembly is adjustable 45° in all axes. A wide range of optical accessories is available.

Body: Die-cast aluminum optical assembly and frame w/ black steel housing, connection box and fasteners.

Electrical: High efficiency low voltage electronic transformer 120V or 277V.

Dimming: Standard power supply compatible with ELV dimming (120V only).

Mounting: 22 gauge galvanized sheet metal. Multiple is supplied with three types of mountings: open ceiling frame (8120) or insulated ceiling housing (8120I).

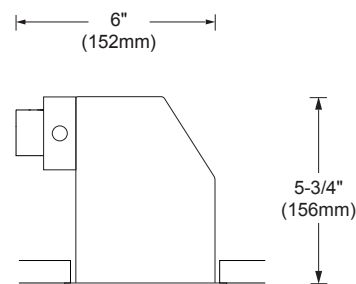
Finish: White RAL9003 or gray RAL9006 painted finish.
RAL custom color available upon request.

Weight: 7lbs (3.2kg)

Warranty: 1 years limited warranty.

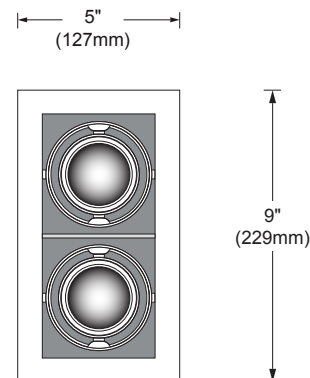
Certification: cULus listed.

Ratings: Damp location, IP20.



FRONT VIEW

*Minimum clearance



BOTTOM VIEW

MULTIPLE SMALL DOUBLE HALOGEN MR16

SPECIFICATION SHEET

PAGE: 2 OF 2

Project name: _____


Type: _____

ACCESSORIES (TO BE ORDERED SEPARATELY)


*Maximum of 1 accessory by optical assembly.

- ☐ **8050** - Frosted glass 
- ☐ **8658-05** - Red glass
- ☐ **8658-06** - Yellow glass
- ☐ **8658-09** - Sky blue glass

* can only be install with the antiglare accessory

- ☐ **8675** - Louvre 

* can only be install with the antiglare accessory

- ☐ **8111** - Visor 

- ☐ **8113** - Antiglare 

Mounting	Minimum clearance height*
MUL-120C-KIT	5-3/4" (146mm)
MI2-T	8-1/2" (216mm)

* At installation

MOUNTING (INCLUDED)

HOUSING FOR OPEN CEILING

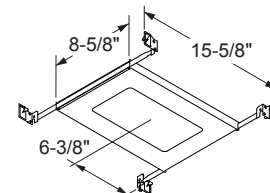
- ☐ **MUL-120C-KIT** - Open ceiling frame

Dimensions: 8-5/8" x 15-5/8" (219mm x 397mm)

Hanger bars: 14 1/4" to 26" (362mm x 660mm)

Total weight: 5lbs (2.25kg)

Clearance: 5-3/4" (146mm)



HOUSING FOR INSULATED CEILING

8120I: Standard housing suitable for insulated ceiling

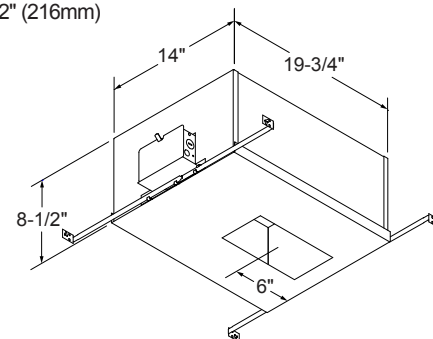
- ☐ **MI2-T** - for standard version

Dimensions: 12-3/4" x 14-3/8", h:6-3/4" (324mm x 365mm, h:171mm)

Hanger bars: 14 1/4" to 26" (362mm x 660mm)

Total weight: TBC

Clearance: 8-1/2" (216mm)



INSTALLATION INFO

Ceiling thickness: Min: 1/8" (3mm), Max 1-3/8" (35mm)

Cut-out dimension: 8-1/2" x 4-1/2" (216mm x 114mm)

ORDERING INFO

MODEL	VOLTAGE	FINISH	MOUNTING
<input type="radio"/> 8120	<input type="radio"/> 120 - 120V	<input type="radio"/> 01 - WHITE	
<input type="radio"/> 8120I	<input type="radio"/> 277 - 277V	<input type="radio"/> 10 - GRAY	

DUE TO CONTINUOUS IMPROVEMENTS, THE INFORMATION HEREIN MAY BE CHANGED WITHOUT NOTICE.

LAST UPDATE: APRIL 22, 2015

MGD - R3

SISTEMALUX



9320 Boul. St-Laurent,
suite 100, Montréal (Québec)
Canada H2N 1N7
P.: 514.523.1339 F.: 514.525.6107
www.sistemalux.com