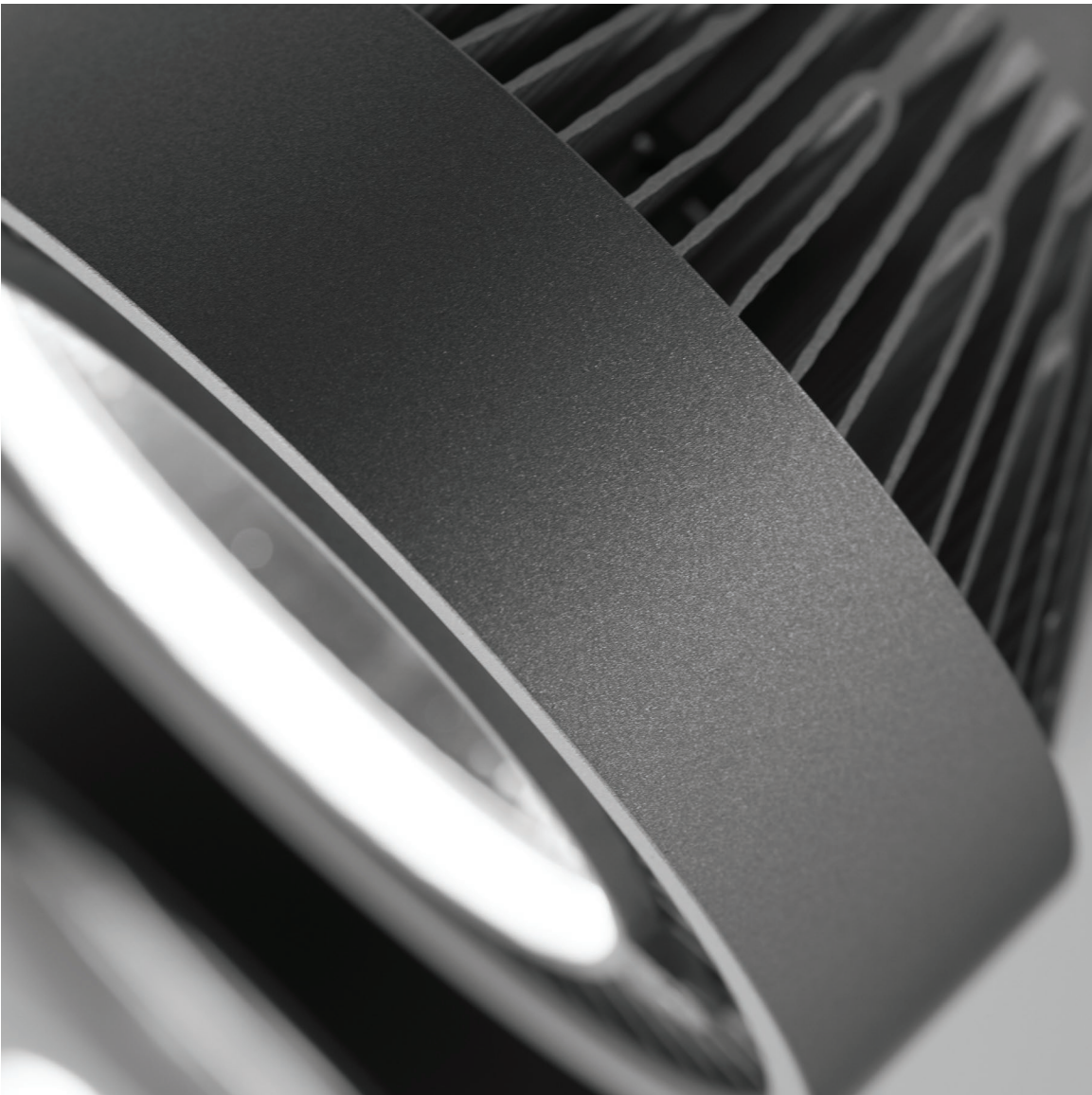
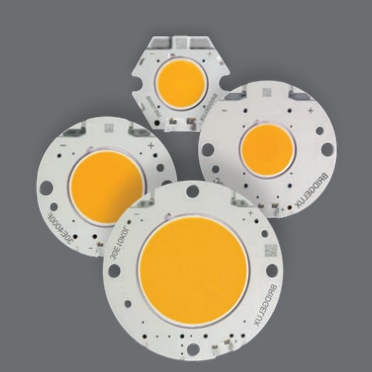


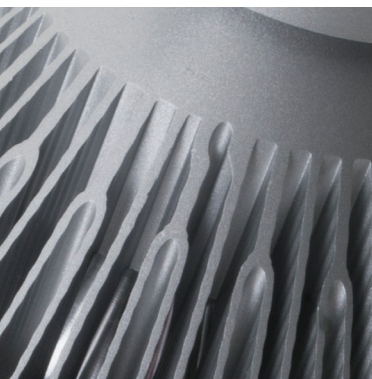
**ECHO**





## RELIABLE PERFORMANCE

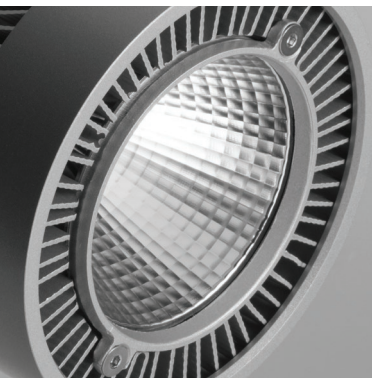
The LEDs inside the ECHO are LM80 tested to guarantee reliable performance and color consistency. Available in most common color temperatures and color rendering up to 97CRI. Application specific solutions with unique spectral distribution are also available on demand.



## THERMAL PERFORMANCE

Thermal management is the key factor in maintaining light output and color consistency during the life of the LEDs. The entire luminaire body is made of CNC machined extruded aluminum, yielding maximum heat dissipation.

LIFE >90% output 132,000 hrs.



## OPTICAL PERFORMANCE

The precision reflectors deliver a high efficiency with long lasting performance. Field changeable reflectors allow design flexibility and on site lighting design optimization.

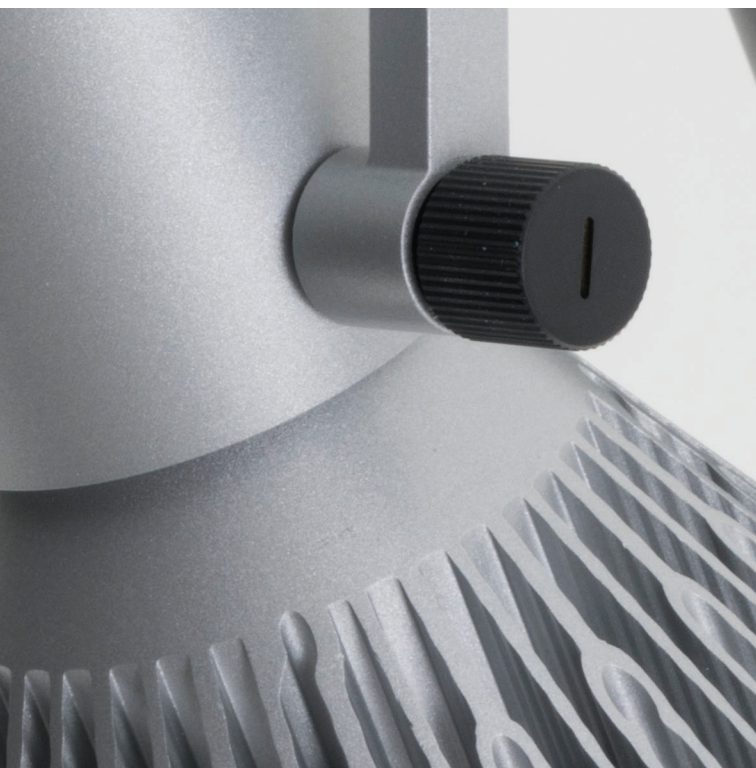


## OPTICAL ACCESSORIES

Cross Baffle, Snoot, Visor, Hex Cell louver

Colorless optical glass lenses:

Soft Focus Lens, Elliptical Lens, Frosted Lens

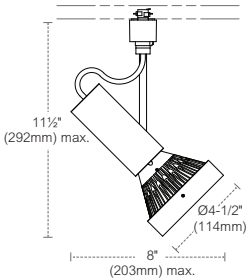




# SPECIFICATIONS

|                               |
|-------------------------------|
| 22W or 28.5W                  |
| 2700K / 3000K / 3500K / 4000K |
| 80, 90 or 97 CRI              |
| 2400 or 3100 lm               |
| Spot / Narrow Flood / Flood   |
| TRIAC Dimming                 |
| White, Gray, Black Matte      |

# DIMENSIONS





## ECHO

Led projector designed for commercial applications. Available with two intensities 22W – 2400 lm and 28.5W – 3100 lm. These high lumen packages are most suited for large scale retail and architectural lighting application, where efficient lighting solutions are desired. The highly reliable thermal design ensure long lasting performance and color consistency.

# SISTEMALUX

[info@sistemalux.com](mailto:info@sistemalux.com)  
[www.sistemalux.com](http://www.sistemalux.com)

## **Montreal**

9320 Boul. St-Laurent, #100  
Montréal, Québec  
Canada H2N 1N7  
P: 514 523-1339

## **Toronto**

383 Adelaide Street West  
Toronto, ON  
Canada M5V 1S4  
P: 416 408-3995

## **Vancouver**

827 Powell Street  
Vancouver, BC  
Canada V6A 1H7  
P: 604 215-1539

## **New York**

60 Madison Ave  
2nd floor  
New York, NY, 10010  
P: 212 481-8188

