

**IMPORTANT - USE ONLY IN DRY LOCATIONS.** READ CAREFULLY BEFORE INSTALLING FIXTURE. RETAIN THESE INSTRUCTIONS FOR FUTURE REFERENCE. THIS PRODUCT MUST BE INSTALLED IN ACCORDANCE WITH THE NATIONAL ELECTRICAL CODE AND ALL APPLICABLE LOCAL CODES, BY A PERSON FAMILIAR WITH THE CONSTRUCTION AND OPERATION OF THE PRODUCT, AND THE HAZARDS INVOLVED. PROPER GROUNDING IS REQUIRED FOR SAFETY.

**NOTE - TRACK IS UL LISTED STRICTLY FOR 120V, 60Hz, 20A OR 277V, 60Hz, 20A. NOT FOR USE WITH REMOTE TRANSFORMER(S).**

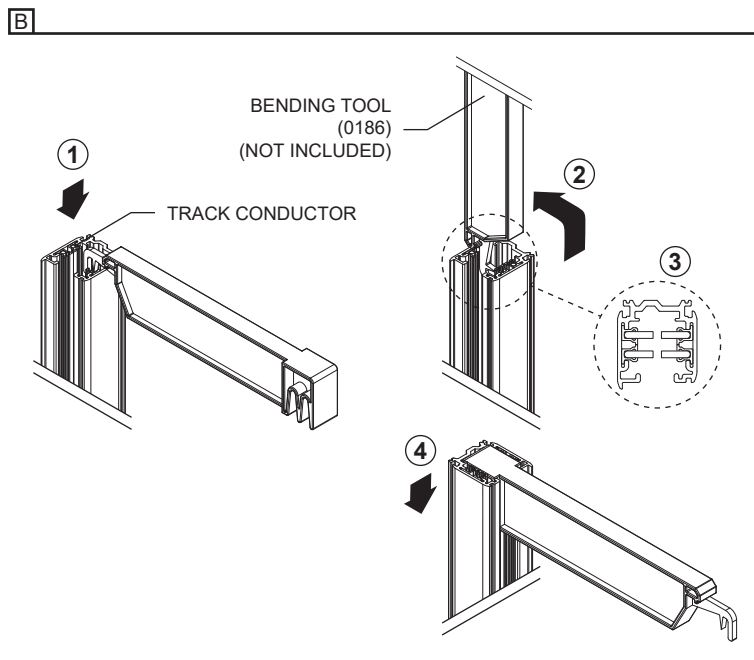
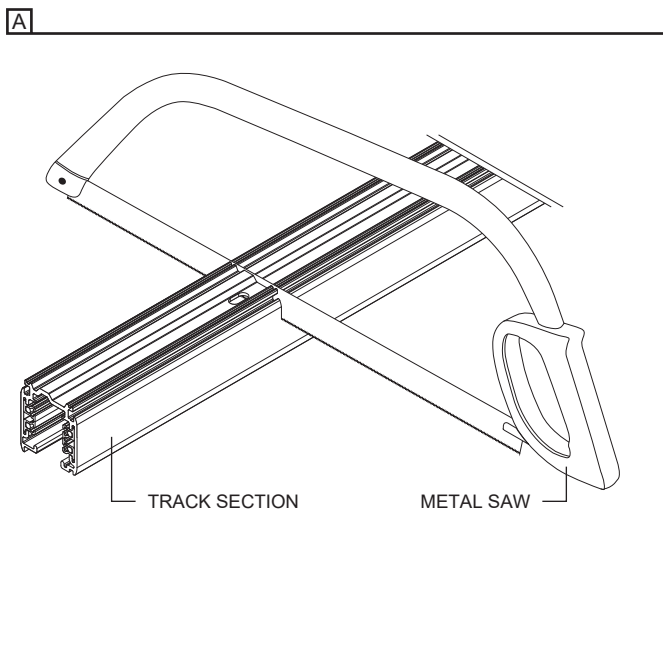
**DIMMING - INCANDESCENT LUMINAIRE ACCEPTS STANDARD ROTARY OR SLIDE DIMMER. SELECT DIMMER WITH AMPLE CAPACITY FOR TOTAL NUMBER OF TRACK FIXTURES. ELECTRIC LOW VOLTAGE FIXTURES REQUIRE USE OF SOLID-STATE (ELECTRONIC) DIMMER CONTROL CAPABLE OF DIMMING TRANSFORMERS. EXAMPLE: LUTRON, COMPACT FLUORESCENT AND HID FIXTURES CANNOT BE DIMMED. FOR LED LUMINAIRE, REFER TO THE FIXTURE'S INSTALLATION SHEET.**

## TWO CIRCUIT TRACK PREPARATION INSTRUCTIONS

**IF THE TRACK NEEDS TO BE CUT ON-SITE, COMPLETE THE FOLLOWING STEPS TO ENSURE FUNCTIONAL TRACK:**

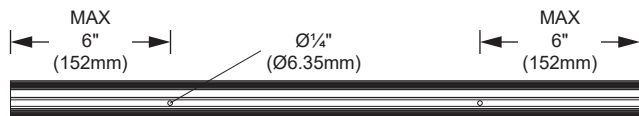
A- USING A METAL SAW, CUT THE TRACK SECTION STRAIGHT.

B- USING THE BENDING TOOL (**NOT INCLUDED**), INSERT THE TIP AROUND THE TRACK CONDUCTOR (1) AND ROTATE THE TOOL 90° UPWARD (2). REPEAT FOR ALL 4 CONDUCTORS (3). CONFIRM CORRECT BENDING BY INSERTING THE OPPOSITE END OF THE TOOL IN THE TRACK (4).

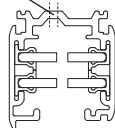


### DRILLING NEW HOLES (FOR SURFACE MOUNT)

**TRACK SECTION ≤ 4' (1.22M) = 2 HOLES**



HOLE LOCATION

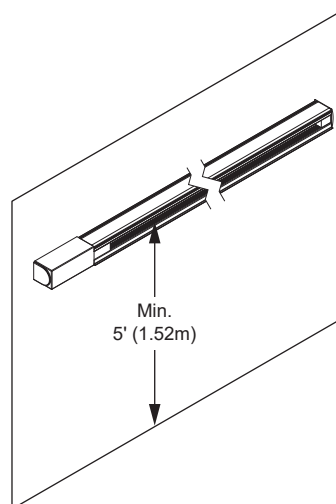


**TRACK SECTION > 4' (1.22M) = HOLES EVERY 4' (1.22M)**



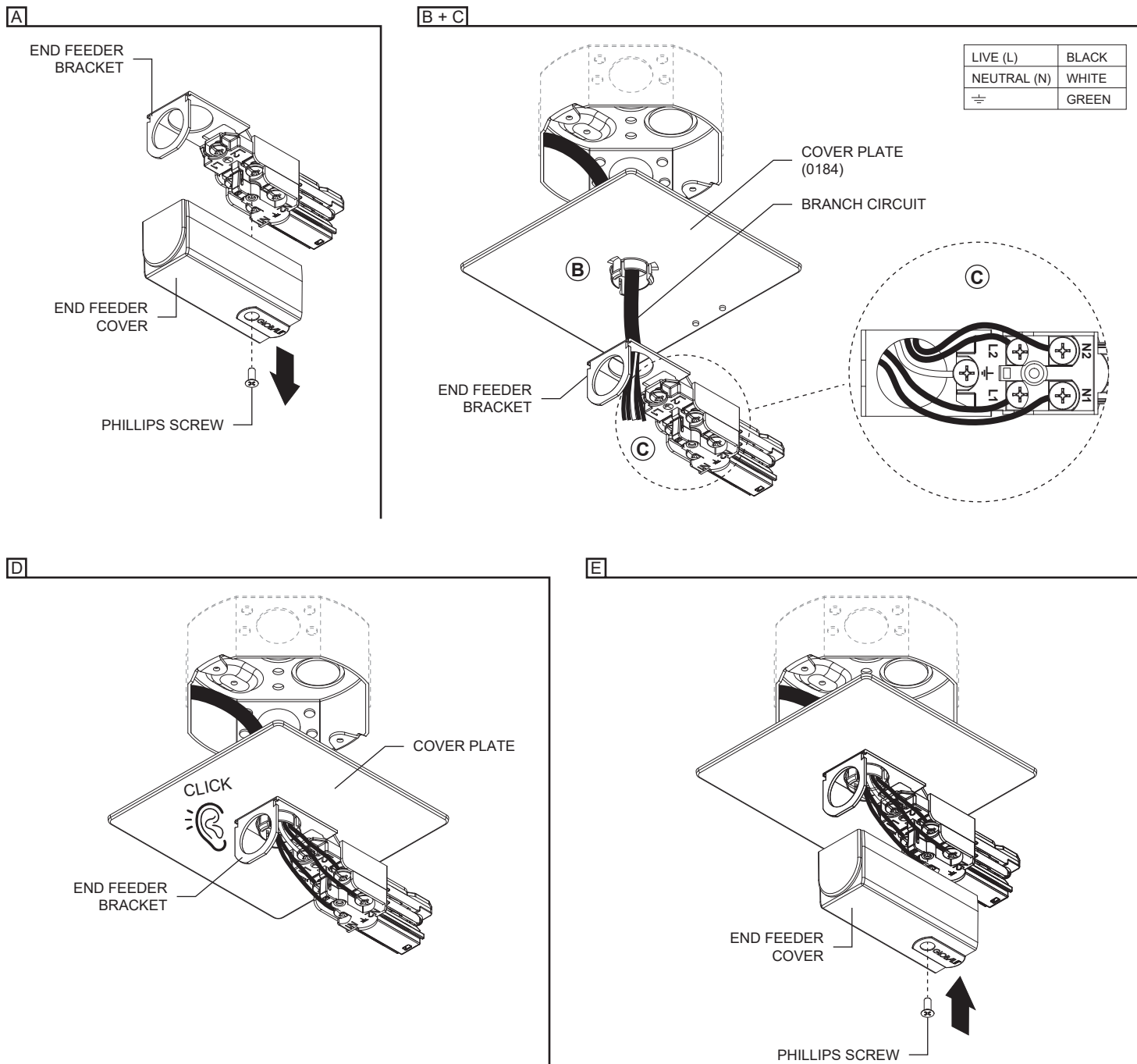
### MINIMUM HEIGHT TRACK INSTALLATION

TRACK SYSTEM MUST BE INSTALLED A MINIMUM OF 5' (1.52m) ABOVE THE FLOOR.



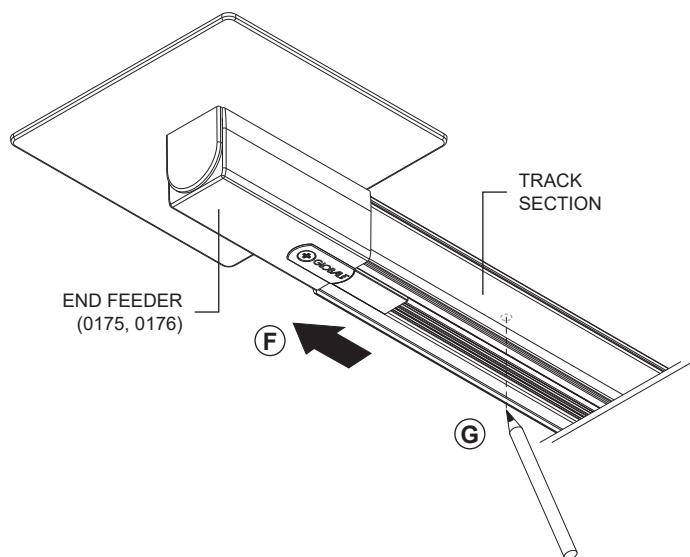
## SURFACE TRACK END FEEDER 4" JUNCTION BOX INSTALLATION (0175, 0176) 120V OR 277V

- A- UNFASTEN THE END FEEDER COVER'S PHILLIPS SCREW AND REMOVE THE COVER.  
B- PASS THE BRANCH CIRCUIT WIRES THROUGH THE COVER PLATE AND END FEEDER BRACKET.  
C- MAKE THE NECESSARY WIRE CONNECTIONS (**FOLLOWING POLARITY MARKINGS**) INSIDE THE END FEEDER BRACKET.  
D- SNAP THE COVER PLATE TO THE END FEEDER BRACKET  
E- FASTEN THE END FEEDER COVER BACK ON.

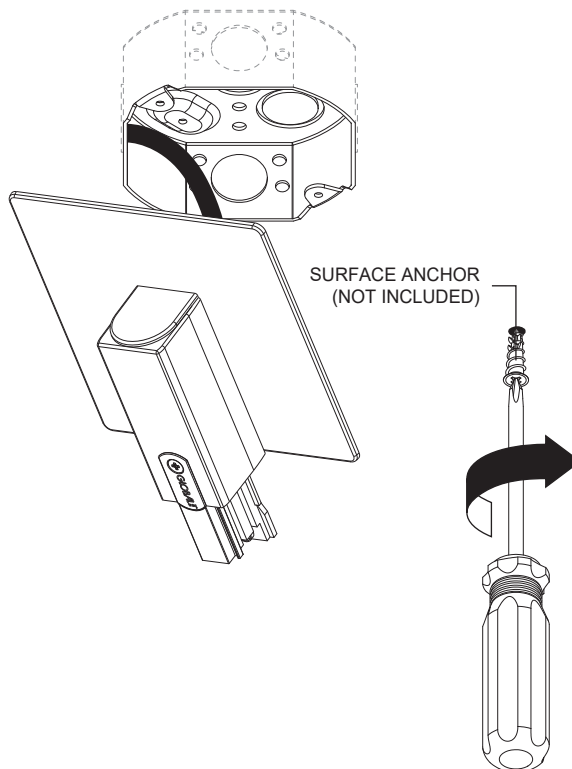


- F- WHILE HOLDING THE END FEEDER OVER THE JUNCTION BOX, SLIDE A TRACK SECTION INTO THE END FEEDER.  
 G- ONCE THE TRACK IS IN THE DESIRED POSITION, USE THE TRACK SECTION TO TRACE THE MOUNTING HOLE POSITIONS.  
 H- REMOVE THE TRACK SECTION AND INSTALL THE PREFERRED SURFACE ANCHOR (**NOT INCLUDED**) INTO TRACED HOLES.  
 I- SLIDE THE TRACK SECTION BACK INTO THE END FEEDER.  
 J- FASTEN THE END FEEDER TO THE TRACK SECTION USING THE PHILLIPS SCREW (**INCLUDED**)  
 K- FASTEN THE TRACK SECTION TO THE SURFACE USING #8 SCREWS (**NOT INCLUDED**).

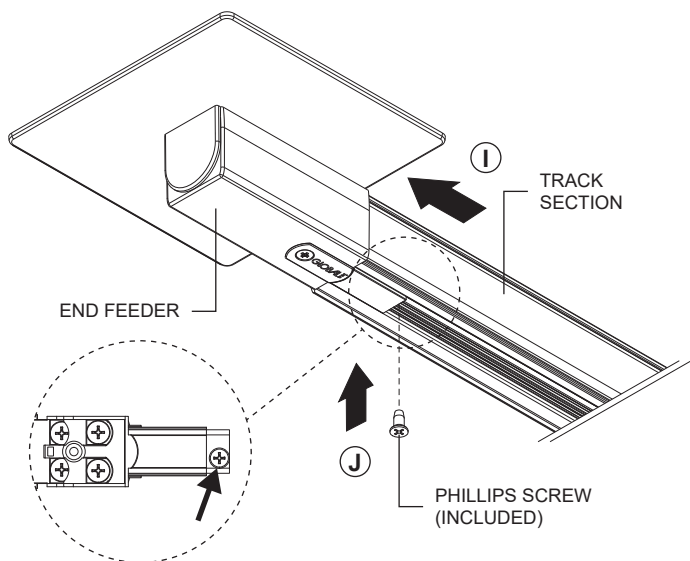
F + G



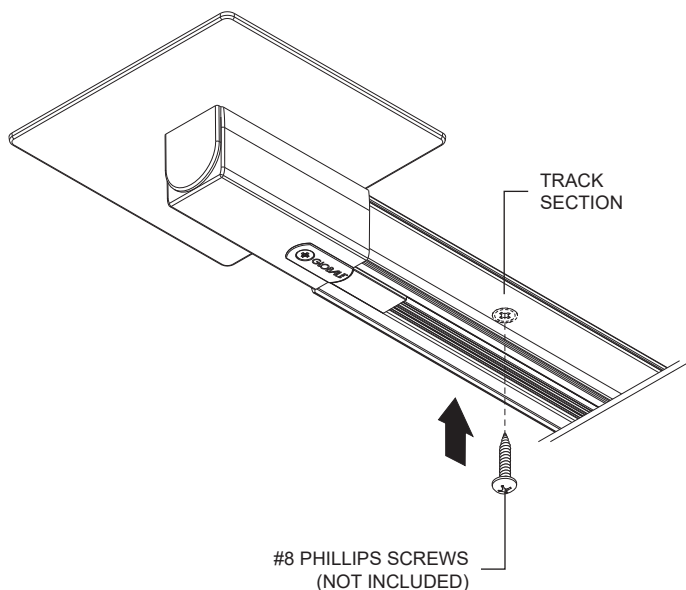
H



I + J



K

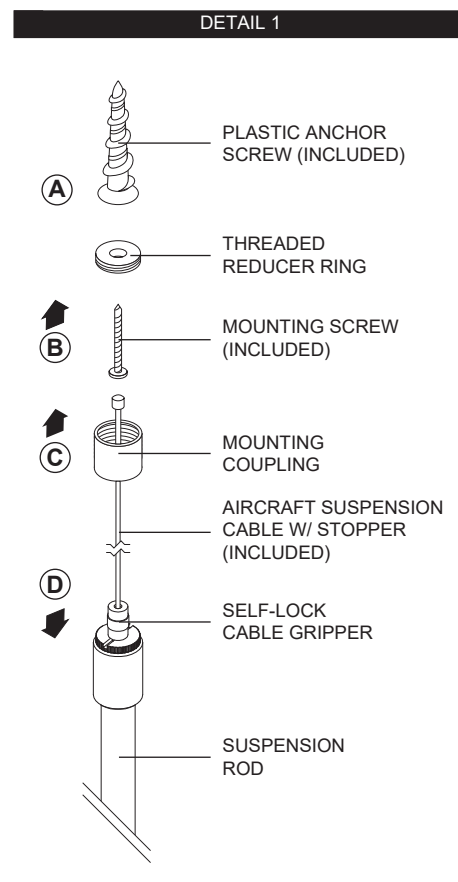
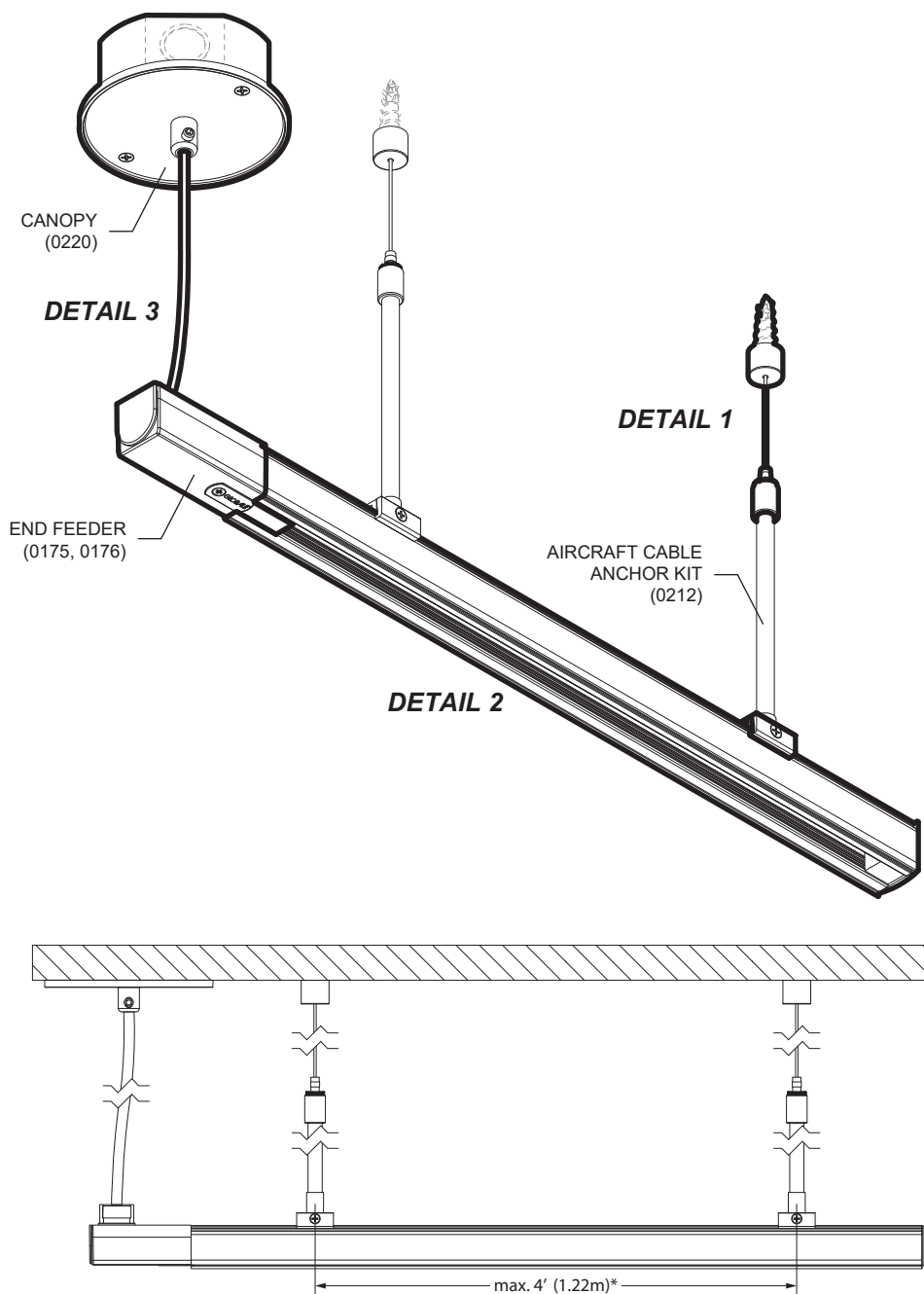


## PENDANT INSTALLATION 120V OR 277V

**MAKE SURE THE TRACK IS HELD IN PLACE BY THE AIRCRAFT CABLES, NOT BY THE POWER CABLE. KEEP THE POWER CABLE LOOSE.**

### DETAIL 1:

- A- PLACE PLASTIC ANCHOR SCREWS (**INCLUDED**) IN THE CEILING AT THE REQUIRED DISTANCE.
- B- PASS SCREW THROUGH THREADED REDUCER RING AND SECURE SCREW INTO PLASTIC ANCHOR SCREW.
- C- FASTEN THE MOUNTING COUPLING CYLINDER ON THREADED REDUCER RING.
- D- ADJUST CABLE LENGTH WITH THE SELF-LOCK CABLE GRIPPER. IF YOU NEED TO ADJUST THE CABLE FOR MORE THAN 6"(152mm), REMOVE THE CABLE FROM THE SELF-LOCK CABLE GRIPPER AND CUT IT TO DESIRED LENGTH. WHEN SET, TIGHTEN THE SELF-LOCK CABLE GRIPPER.



\*REFER TO P.1 FOR CUSTOM HOLE DRILLING INSTRUCTIONS

## DETAIL 2:

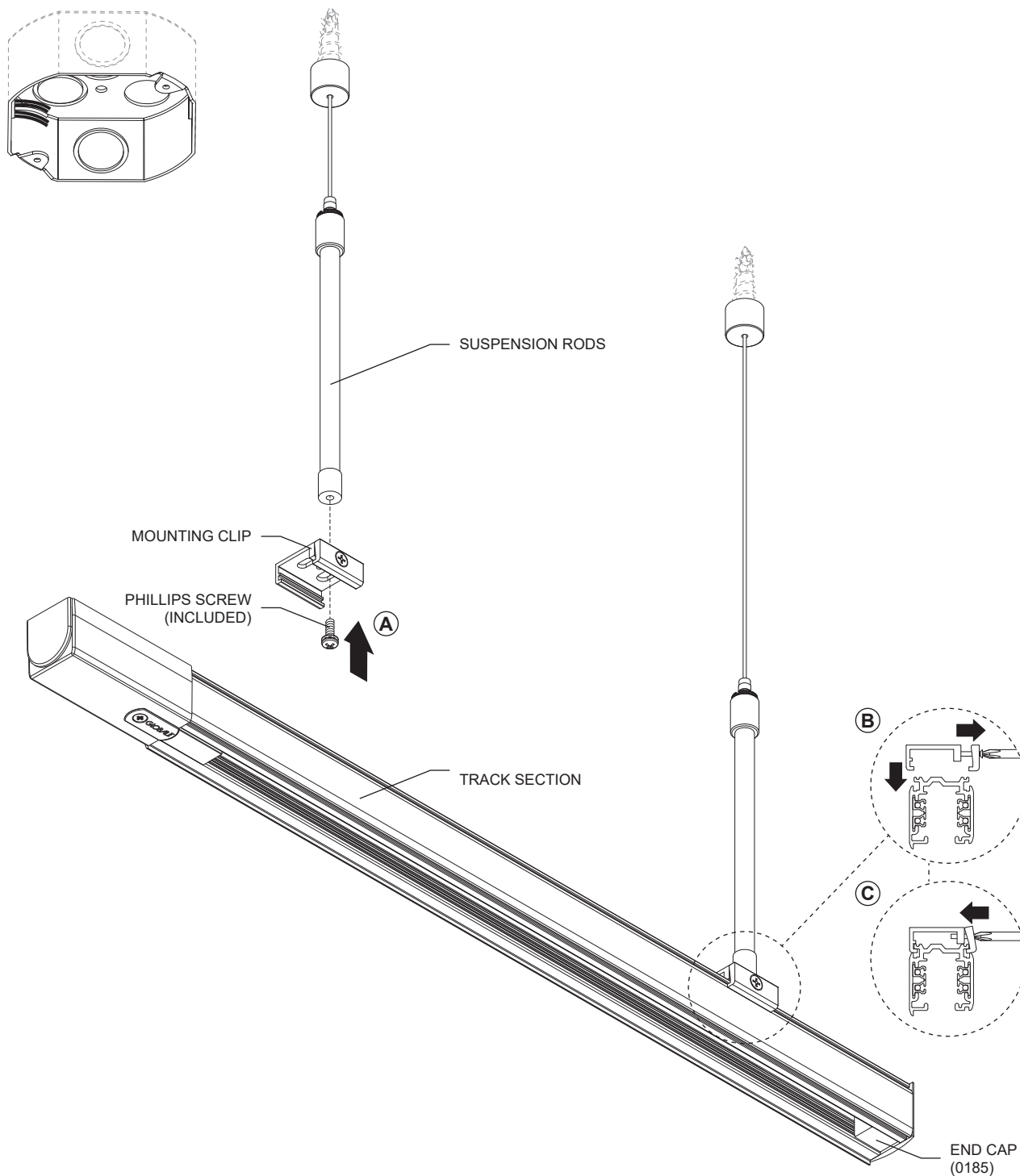
A- FASTEN THE MOUNTING CLIPS (**INCLUDED**) TO THE SUSPENSION RODS USING THE PHILLIPS SCREWS (**INCLUDED**).

B- UNFASTEN THE MOUNTING CLIP SIDE PHILLIPS SCREW AND SLIDE IT ON THE TRACK SECTION.

C- FASTEN THE SCREW UNTIL THE MOUNTING CLIP IS SECURILY HELD INTO PLACE.

**\*REMOVE END CAP TO ALLOW FOR CONTINUOUS LINE INSTALLATION. (SEE PAGE 8)**

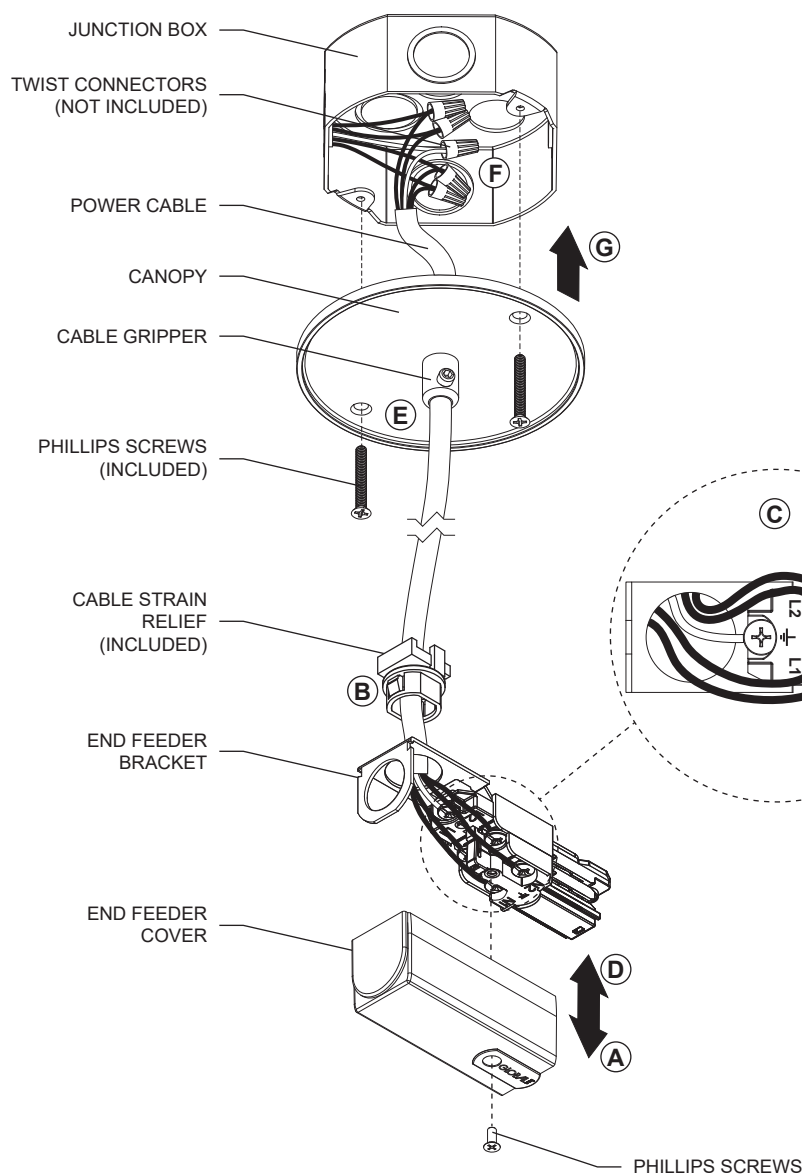
## DETAIL 2



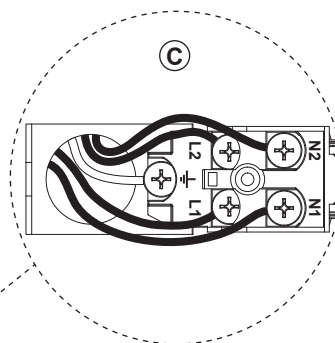
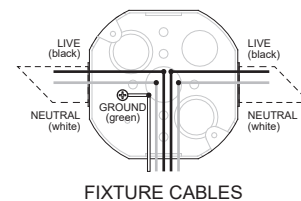
## DETAIL 3:

- A- UNFASTEN END FEEDER COVER'S PHILLIPS SCREW.
- B- PASS THE POWER CABLE THROUGH THE CABLE STRAIN RELIEF (**INCLUDED**) THEN INSERT IT INSIDE THE END FEEDER BRACKET HOLE.
- C- MAKE THE NECESSARY CONNECTIONS (**FOLLOWING POLARITY MARKINGS**) INSIDE THE END FEEDER BRACKET.
- D- FASTEN COVER BACK ON.
- E- PASS THE POWER CABLE THROUGH THE CANOPY'S CABLE GRIPPER AND ADJUST TO DESIRED LENGTH. **THE POWER CABLE MUST NOT BE USED TO HOLD THE TRACK IN PLACE.**
- F- MAKE WIRE CONNECTIONS (**SEE WIRING DIAGRAM**) INSIDE JUNCTION BOX USING TWIST CONNECTORS (**NOT INCLUDED**).
- F- SCREW CANOPY TO THE JUNCTION BOX WITH (2) PHILLIPS SCREWS (**INCLUDED**).

DETAIL 3

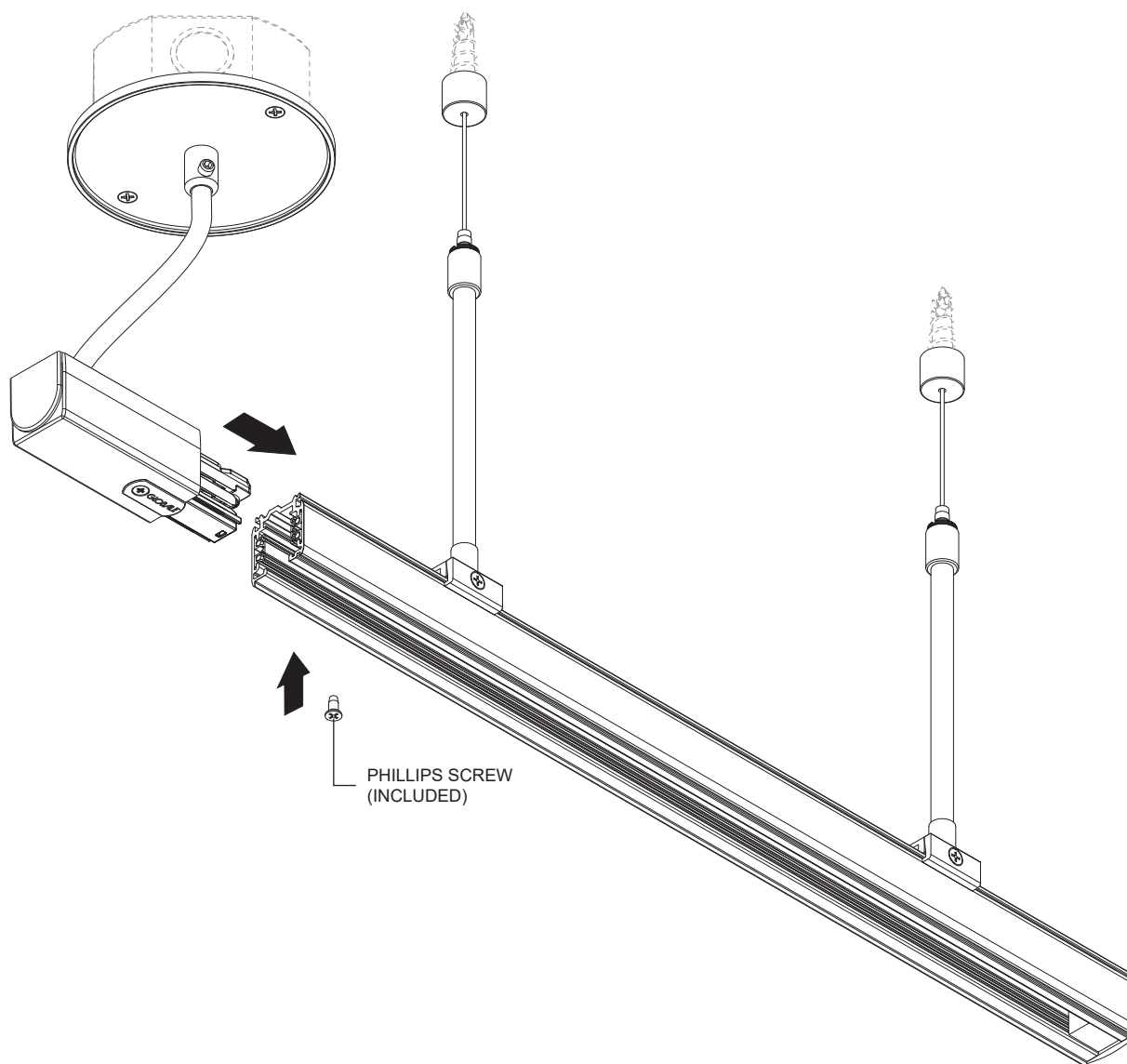


WIRING DIAGRAM



## FINAL ASSEMBLY

INSERT END FEEDER BRACKET INTO TRACK SECTION AND SCREW THE END FEEDER TO THE TRACK SECTION USING THE PHILLIPS SCREW (**INCLUDED**)



## CONTINUOUS LINE CONNECTOR INSTALLATION

- 1- REMOVE THE PREVIOUS TRACK'S END CAP
- 2- ALIGN THE DIRECT COUPLER'S GUIDE LUG WITH THE TRACK'S TOP GROOVE.
- 3- INSERT THE DIRECT COUPLER INTO THE END OF THE TRACK (**SEE P.1 FOR TRACK CONDUCTOR PREPARATIONS**), ENSURING THAT THE GUIDE LUG ENTERS THE GROOVE AT THE TOP OF THE TRACK.
- 4- IF THE CONNECTION IS TOO TIGHT. LOOSEN THE LOCK SCREW UNTIL THE CONNECTOR SLIDES IN.
- 5- ONCE THE CONNECTOR IS CORRECTLY INSERTED, TIGHTEN THE LOCK SCREW.

**NOTE** - TRACKS ARE POLARIZED, SO CONNECTORS CAN ONLY BE INSTALLED IN THE TRACK IN ONE DIRECTION. I, L, T AND X-CONNECTORS ARE PRE-WIRED, AND SHOULD NOT BE RE-CONFIGURED IN THE FIELD.

