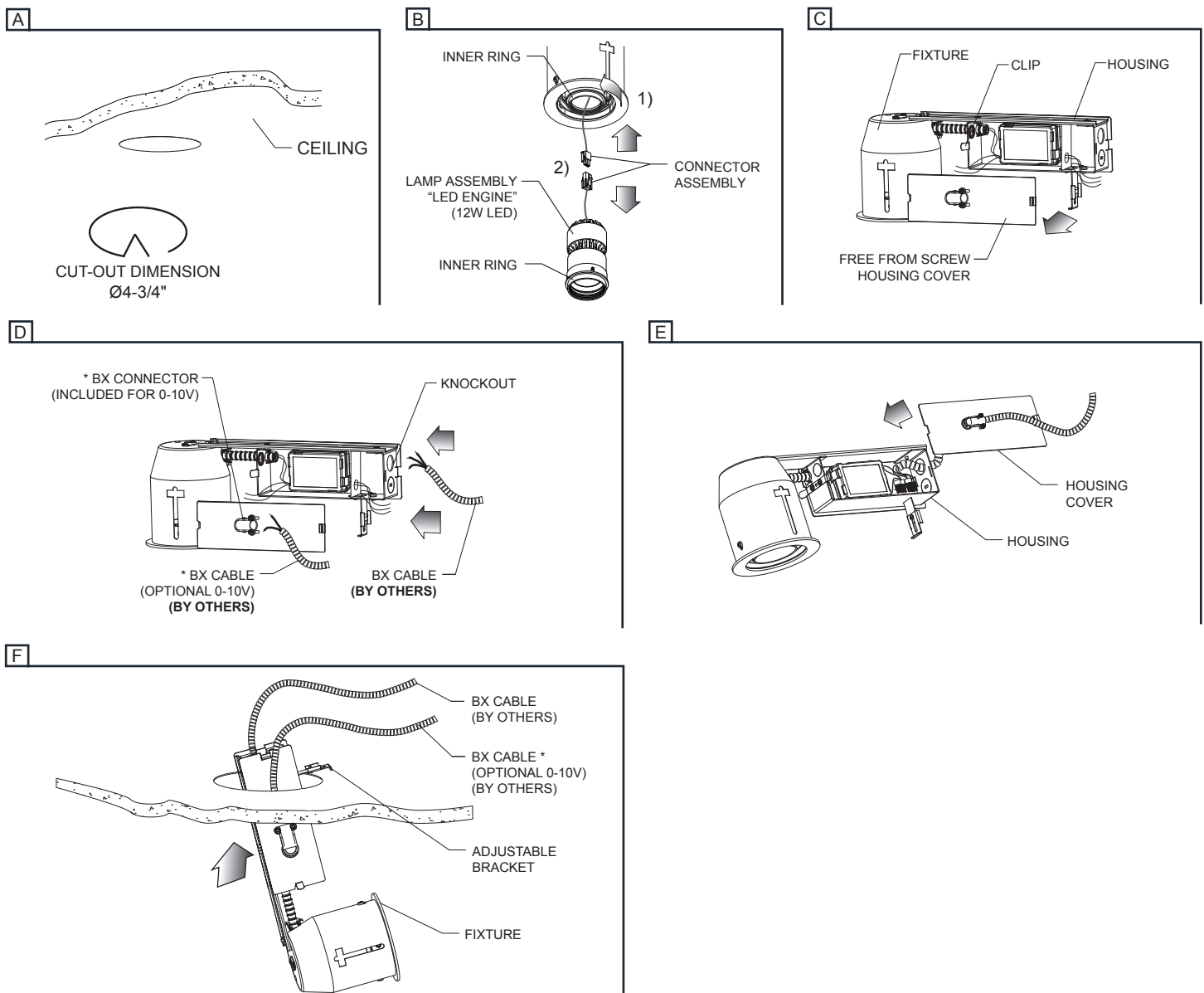


IMPORTANT - READ CAREFULLY BEFORE INSTALLING FIXTURE. RETAIN THESE INSTRUCTIONS FOR FUTURE REFERENCE.
THIS PRODUCT MUST BE INSTALLED IN ACCORDANCE WITH THE NATIONAL ELECTRICAL CODE AND ALL APPLICABLE LOCAL CODES, BY A PERSON FAMILIAR WITH THE CONSTRUCTION AND OPERATION OF THE PRODUCT, AND THE HAZARDS INVOLVED. PROPER GROUNDING IS REQUIRED FOR SAFETY.

8108RF

FIXTURE INSTALLATION

- A-** MAKE CUT-OUT IN THE CEILING AS INDICATED.
- B-** REMOVE THE INNER RING BY TURNING COUNTER CLOCKWISE THEN UNCLIP THE CONNECTOR ASSEMBLY.
- C-** UNCLIP FREE-FROM-SCREW HOUSING COVER FROM HOUSING.
- D-** WITH THE HELP OF A SCREWDRIVER, REMOVE KNOCKOUT FROM THE HOUSING AND INTRODUCE BX CABLE (BY OTHERS). MAKE ALL NECESSARY CONNECTIONS USING TWIST CONNECTORS (PROVIDED BY OTHERS). *FOR OPTIONAL DIMMING 0-10V: WIRES MUST BE RUN THROUGH A SEPARATE HOLE WHEN CONNECTING A DIMMING CONTROLLER, FOR WHICH A BX CONNECTOR IS INCLUDED. (SEE DRAWING BELOW).
- E-** ONCE WIRING IS DONE, MOUNT HOUSING COVER ONTO HOUSING AVOIDING PINCHING ANY CONDUCTOR.
- F-** INTRODUCE FIXTURE THROUGH CUT-OUT, ADJUSTABLE BRACKET GOES FIRST. IF NECESSARY, SET ADJUSTABLE BRACKET HEIGHT IN ORDER TO MAKE IT FIRMLY STAND ON THE CEILING.



MULTIPLE SMALL ROUND NO PLASTER FRAME REQUIRED

INSTALLATION SHEET

PAGE: 2 OF 2

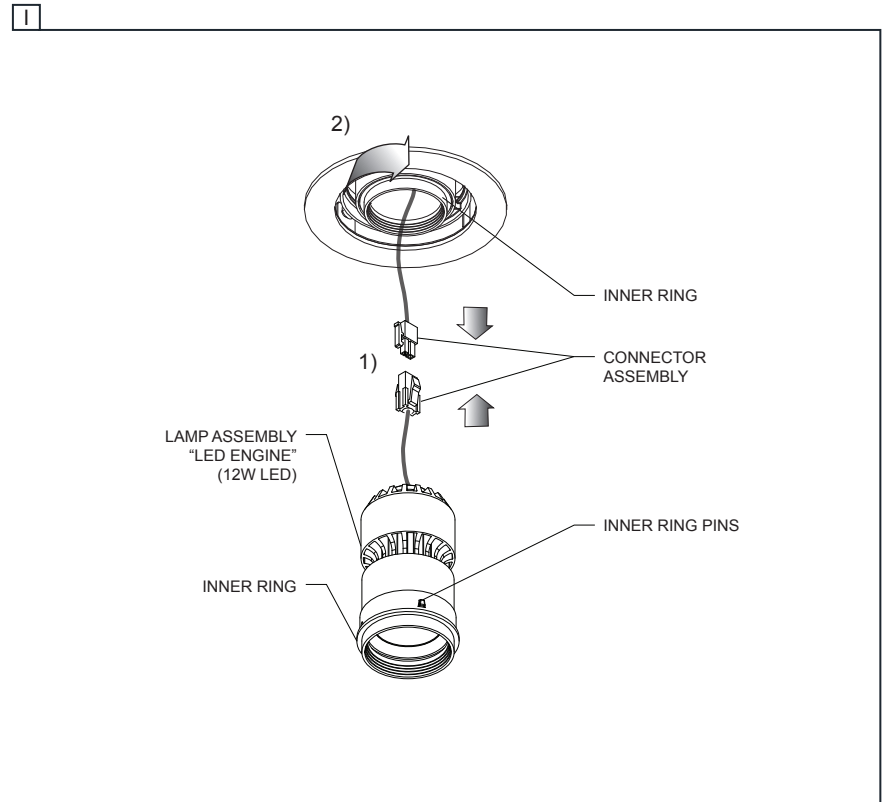
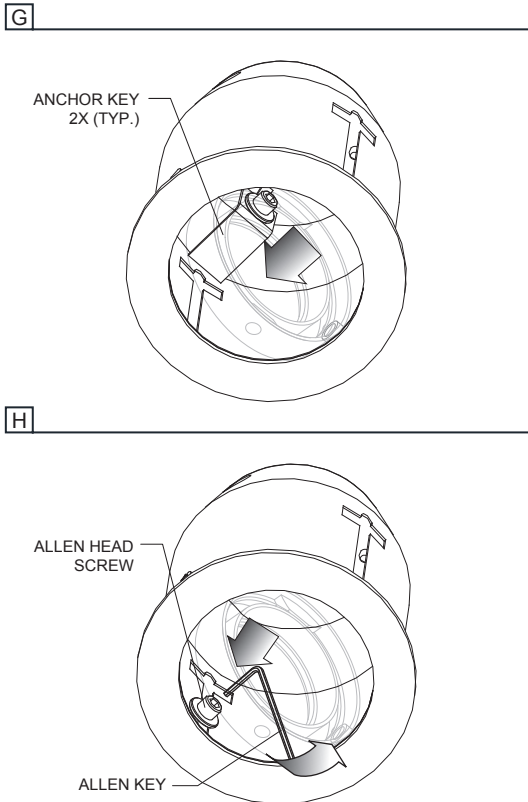
G- FASTEN WASHER & SCREW PARTIALLY TO ANCHOR KEY, LEAVING A SMALL GAP. INSERT ANCHOR KEYS (2X) IN CROSS-SHAPED CUT-OUTS AT BOTH ENDS OF MULTIPLE SMALL ASSEMBLY.

H- SLIDE ALLEN HEAD SCREW ALONG SLOT. WHEN ANCHOR RESTS ON CEILING SURFACE, TIGHTEN WITH PROVIDED ALLEN HEAD KEY.

I- CLIP-IN THE TWO CONNECTORS TOGETHER. THEN PLACE INNER RING IN THE INTERMEDIATE RING BY ALIGNING THE TWO PINS WITH THE GAPS AND TURNING CLOCKWISE.

TO ENSURE THE FIXTURE IS TIGHTLY SECURED, PUSH FRAME UPWARDS AGAINST CEILING DURING INSTALLATION.

IMPORTANT: PLEASE BE SURE TO ADD ADDITIONAL SUPPORT IF NEEDED IN ORDER TO SAFELY SECURE THE LUMINAIRE TO THE CEILING.



ORDERING INFO

| MODEL | LED | OPTIC | VOLTAGE | FINISH | OPTIONAL DIMMING |
|--|-----|-------|---------|--------|---------------------|
| <div> <div> MODEL 8108RF - No plaster frame required </div> <div> LED 027* - 2700K, 97CRI 927 - 2700K, 90CRI 030* - 3000K, 97CRI 830 - 3000K, 80CRI 930 - 3000K, 90CRI 835 - 3500K, 80CRI 935 - 3500K, 90CRI 840* - 4000K, 80CRI </div> <div> OPTIC SP - 22° NF - 29° FL - 40° WF - 60° </div> <div> VOLTAGE 120 - 120V UNV - 120-277V </div> <div> FINISH 01 - White 02 - Black 10 - Gray </div> <div> OPTIONAL DIMMING LTE - Leading (TRIAC) and trailing edge (ELV) for 120V only D10 - 0-10V </div> </div> | | | | | |

* LED options may require a longer lead time than standard. Please contact factory for details.

INS-314-RF

LAST UPDATE: APRIL 21, 2017

LB - R0

SISTEMALUX



9320 Boul. St-Laurent, suite 100, Montréal (Québec) Canada H2N 1N7
P.: 514.523.1339 F.: 514.525.6107 www.sistemalux.com